

Africa Trip 2016

An Educational Expedition

By Kathleen Carpenter with Barbara Sadowsky



Where We Traveled

✦ **South Africa** – Johannesburg

✦ **Botswana**

- Khwai Concession
(Tent Camp)
- Chobe National Park

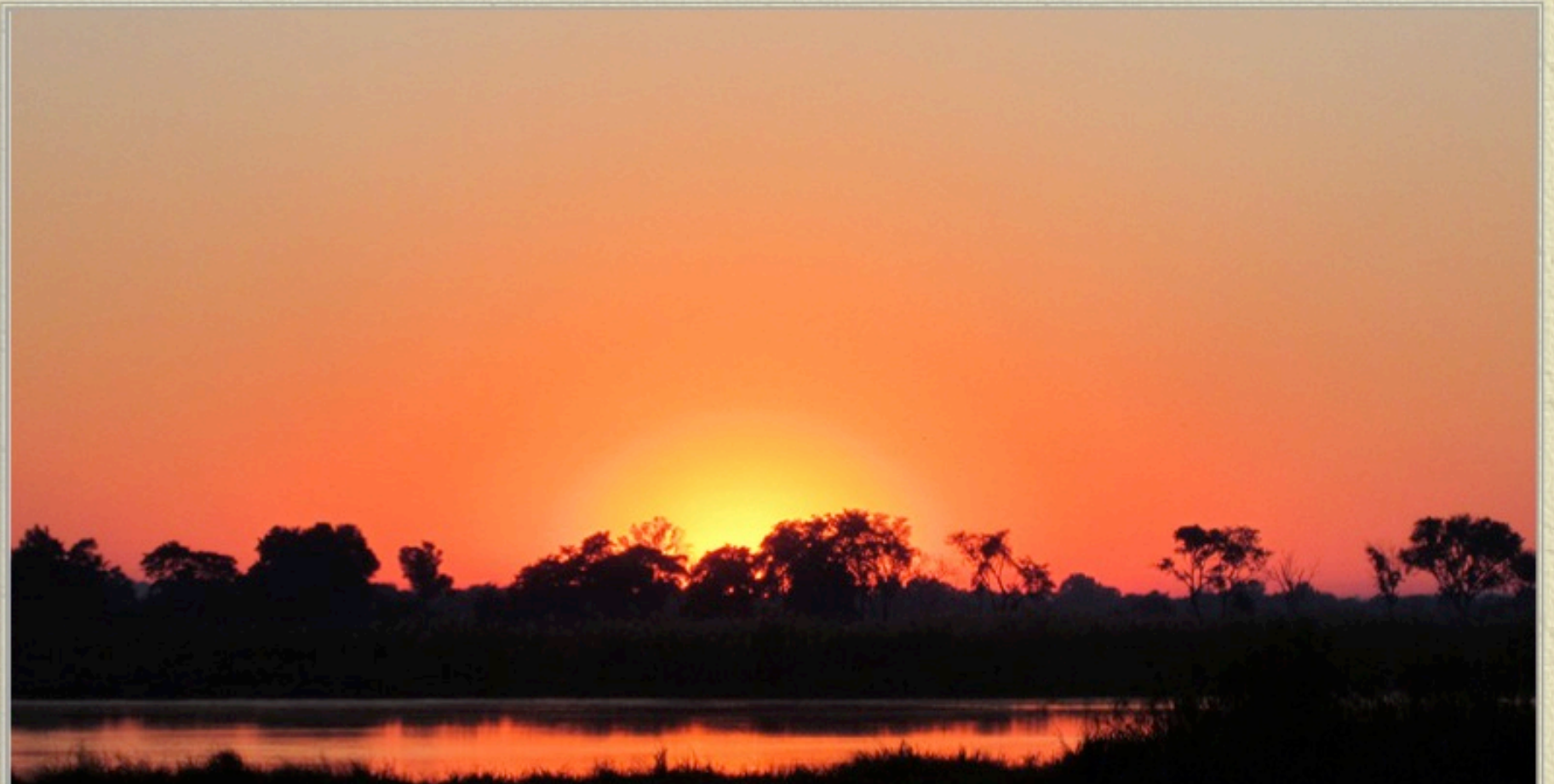
✦ **Zambia**

- Victoria Falls

✦ **Zimbabwe**

- Livingstone Safari Lodge
- South Luangwa
(Stayed at the Mfuwe
Safari Lodge)





Botswana

Traveling into the tent camp in the Okavango Delta

The Animals We Saw



FUN FACTS:

- ❖ We saw: 39 different kinds/species of mammals
- ❖ 3 kinds of reptiles
- ❖ 68 different kinds/species of birds







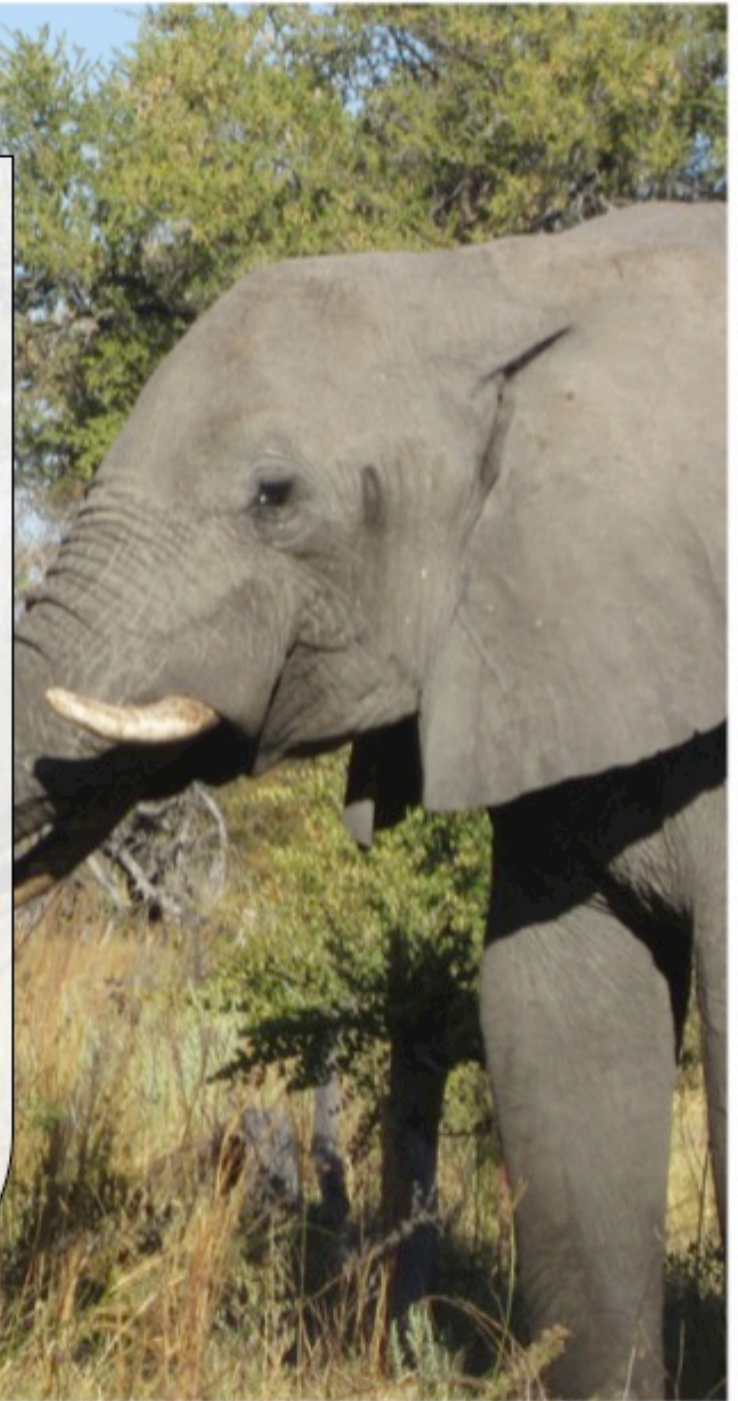




Fun Facts About Elephants:

1. "The African Elephant" (*Loxodonta Africana*)
2. "Elephants have 4 wheel drive" They can expand and contract their feet to negotiate muddy areas
3. Elephants have developed long eyelashes which helps to prevent dirt, debris, insects and sand from blowing or flying into their eyes during feeding, dust-bathing or in strong windy conditions. Elephants have upper and lower eyelids, as well as a third eyelid which moves from side to side (horizontally) across the eye.

Elephants do not have tear ducts.















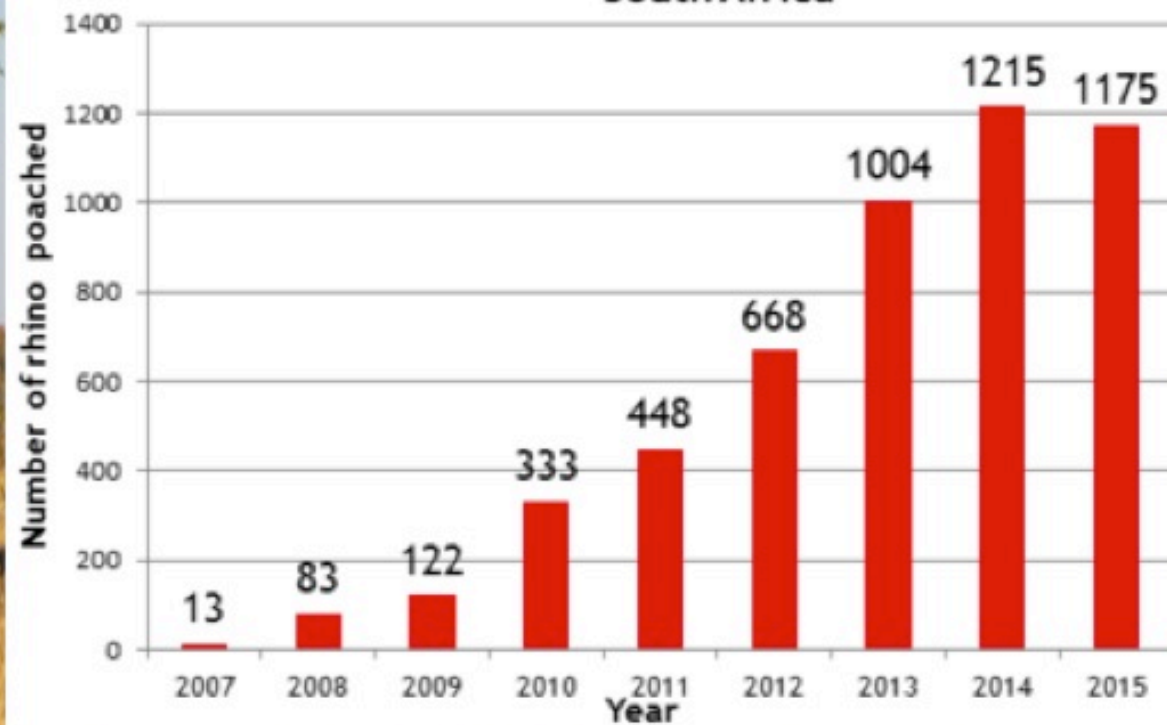




FYI:

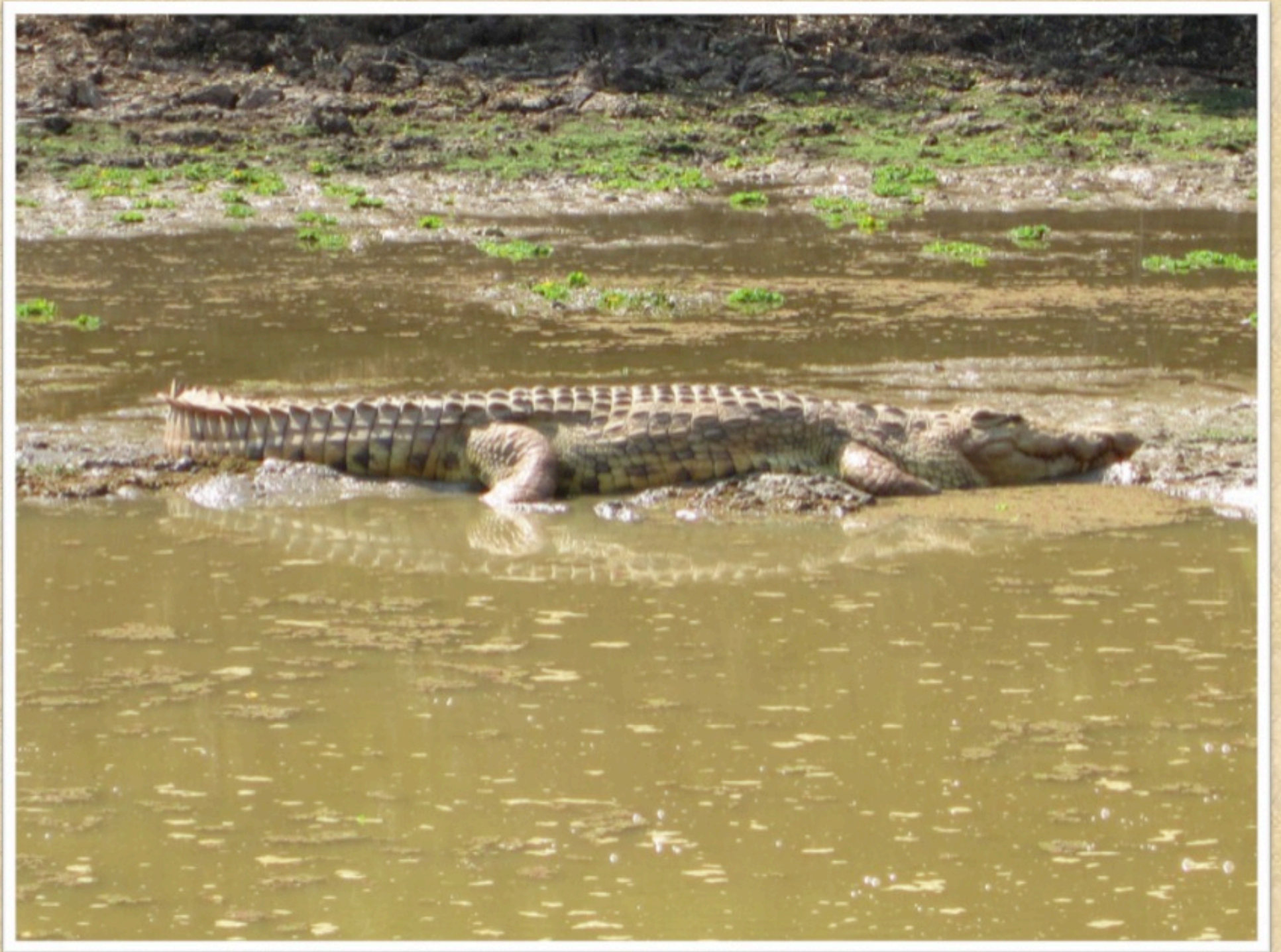
Black rhinos which are kept under constant surveillance to protect them from poachers. White rhinos are virtually extinct.

Recorded number of rhinos poached in South Africa



Above: Graph showing South African rhino poaching statistics using data published by South African Department of Environmental Affairs (2016)





























FUN FACT:

We saw two types of giraffes

1. The first type is the Thornicroft
2. The next type is the Southern

Among the differences between the two are their patterns of coloration.

































































FUN FACT:

- We saw two types of zebras
 1. The first set of zebra (Burchell's) have a set of brown stripes in between the black and white stripes
 2. The next set of zebra (Crawshay's) just have the black and white















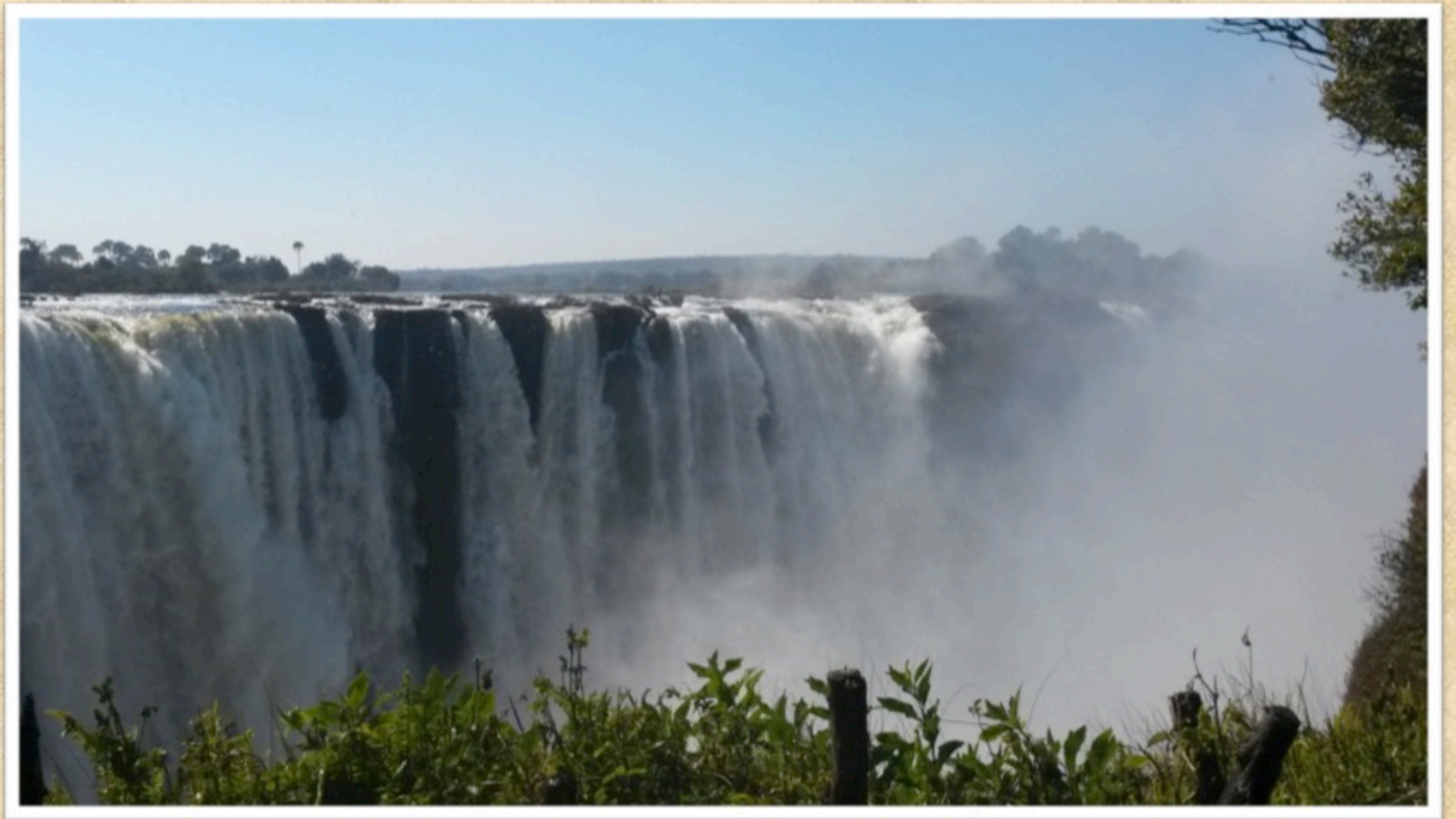


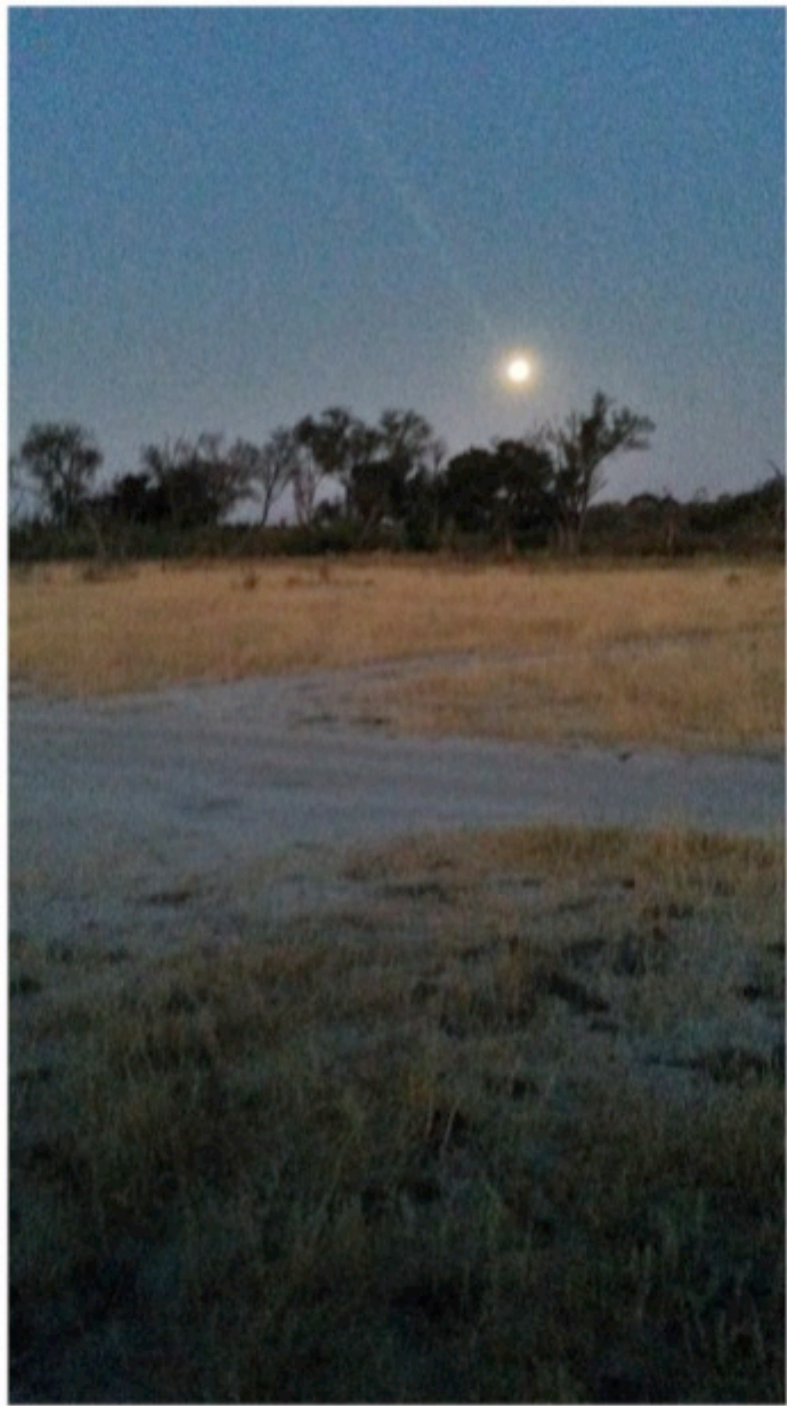
The Landscape We Saw

















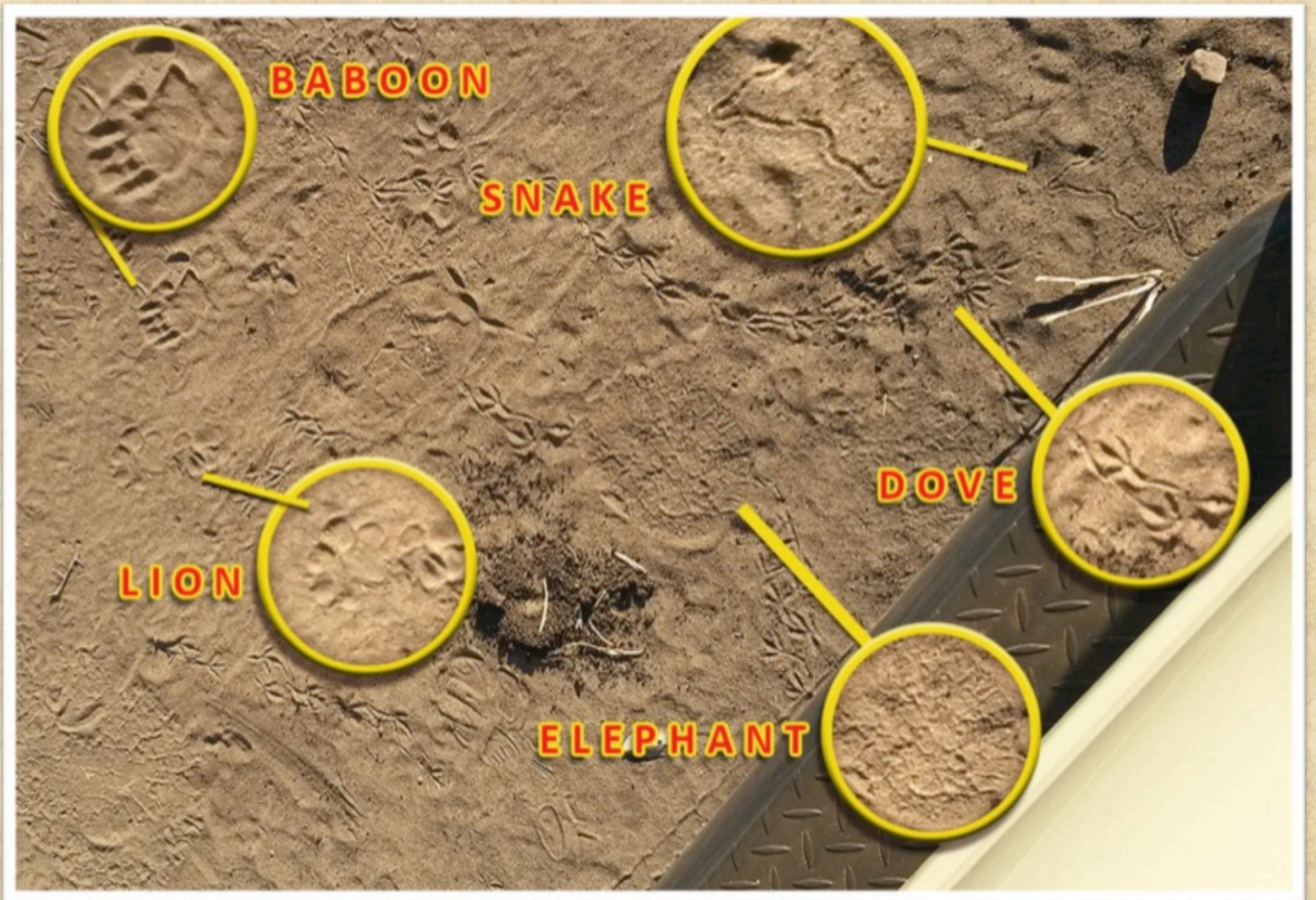












BABOON

SNAKE

DOVE

LION

ELEPHANT

A magnifying glass with a yellow frame and handle is positioned over a large, dark, triangular-shaped footprint in the sand. The footprint has a distinct three-toed structure.

ANTELOPE

A magnifying glass with a yellow frame and handle is positioned over a smaller, dark, three-toed footprint in the sand. The footprint is more compact and rounded than the one above.

DOVE





















FUN FACT:

White-Browed Sparrow-Weavers build their nests on one side of the tree dependent on the prevailing winds. In this part of Africa, this is usually on the west side of the tree. They build extra nests to entertain visitors.



FYI:

A herd of elephants can totally destroy an environment which is unlikely to recover. This is happening more and more as elephants are restricted in their ability to move around because of growing human population and poaching.



David Livingstone

A Scottish missionary and doctor born in 1813 and died in 1873. He went to Africa in the 1840s and died there. His body was returned to England and interred in Westminster Abbey, but his heart was removed and buried in Zambia so that his heart could always be a part of Africa. He was an explorer, missionary, and an advocate for the abolition of the African slave trade.

Where We Stayed









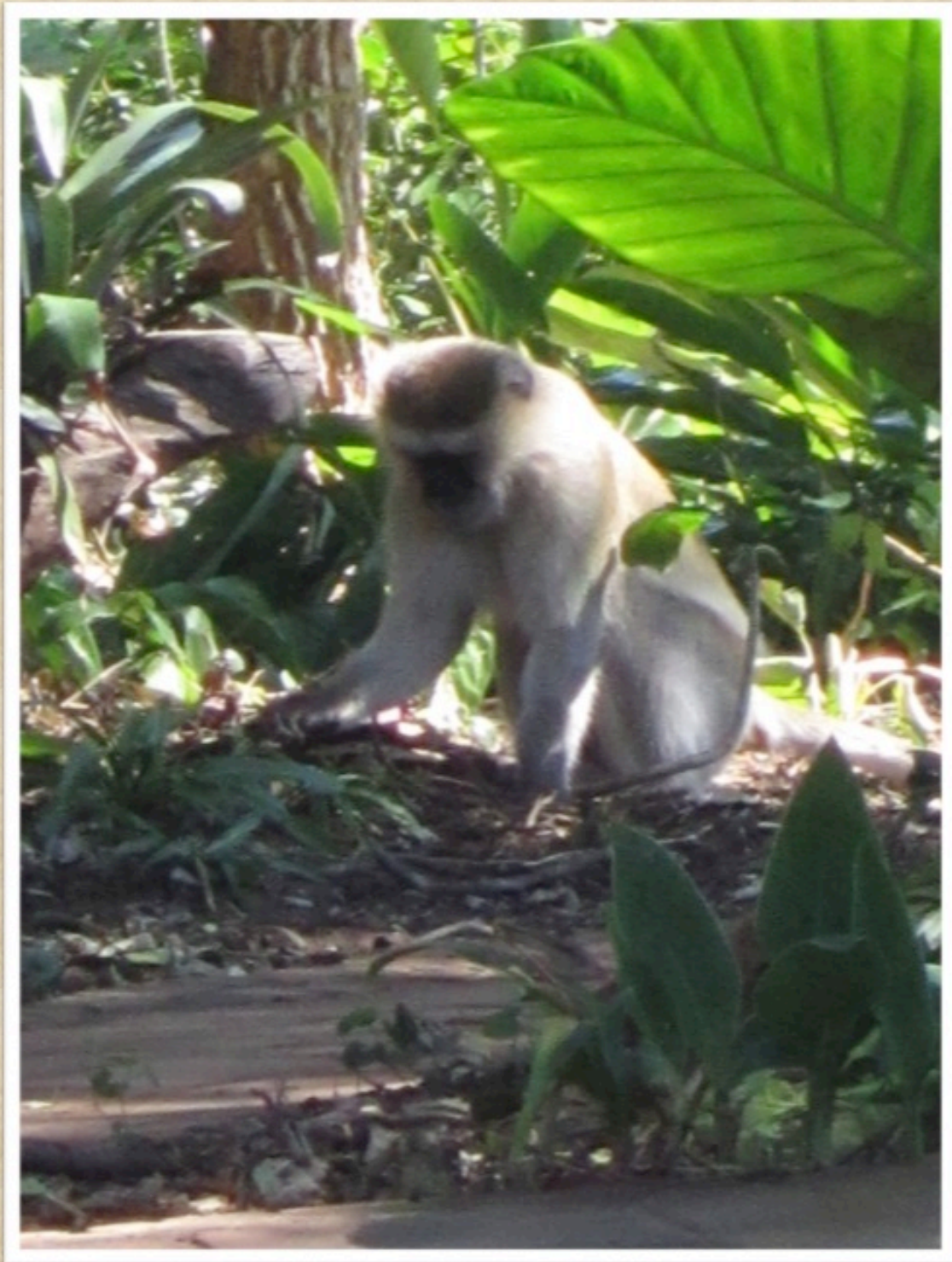


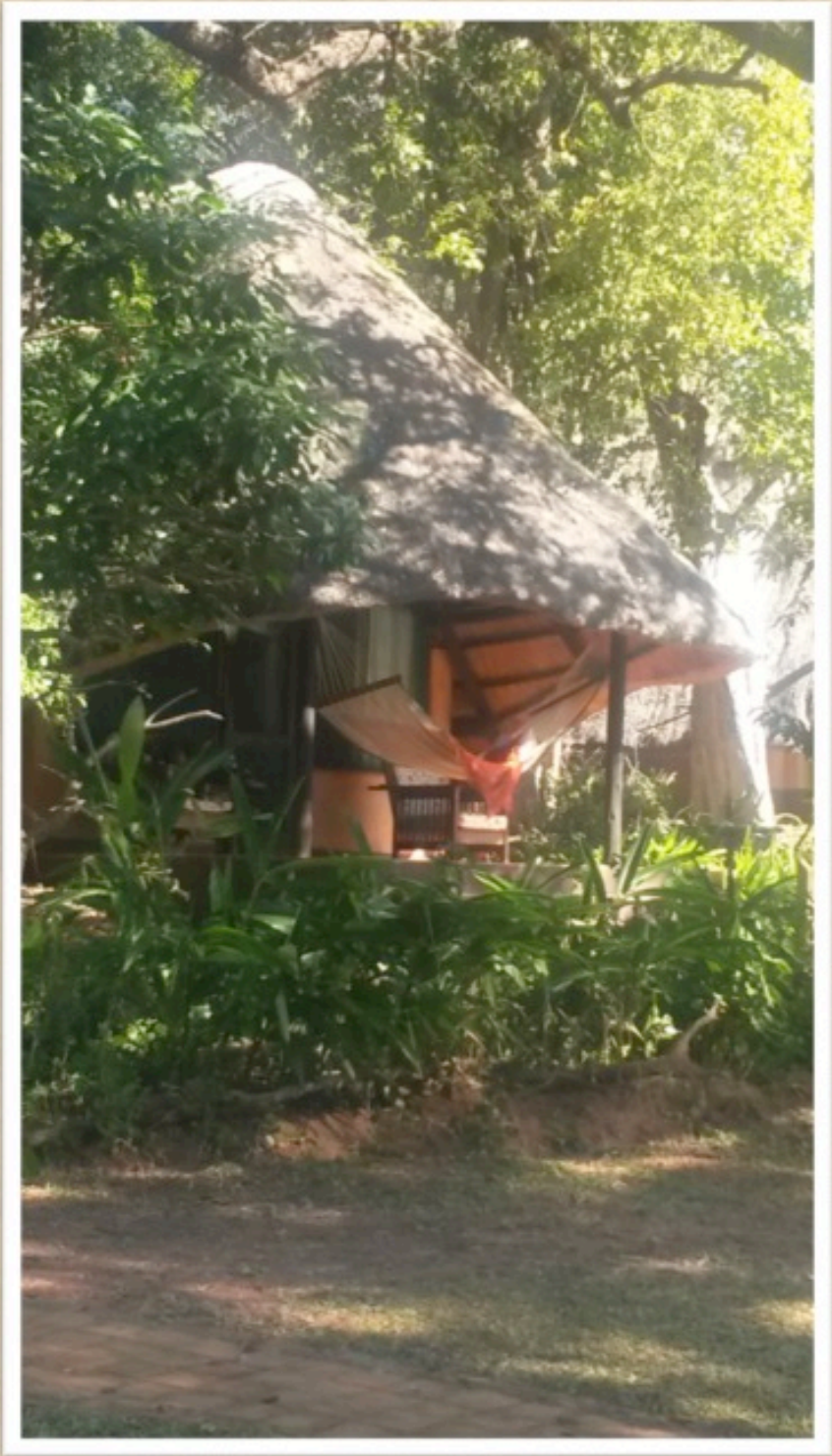


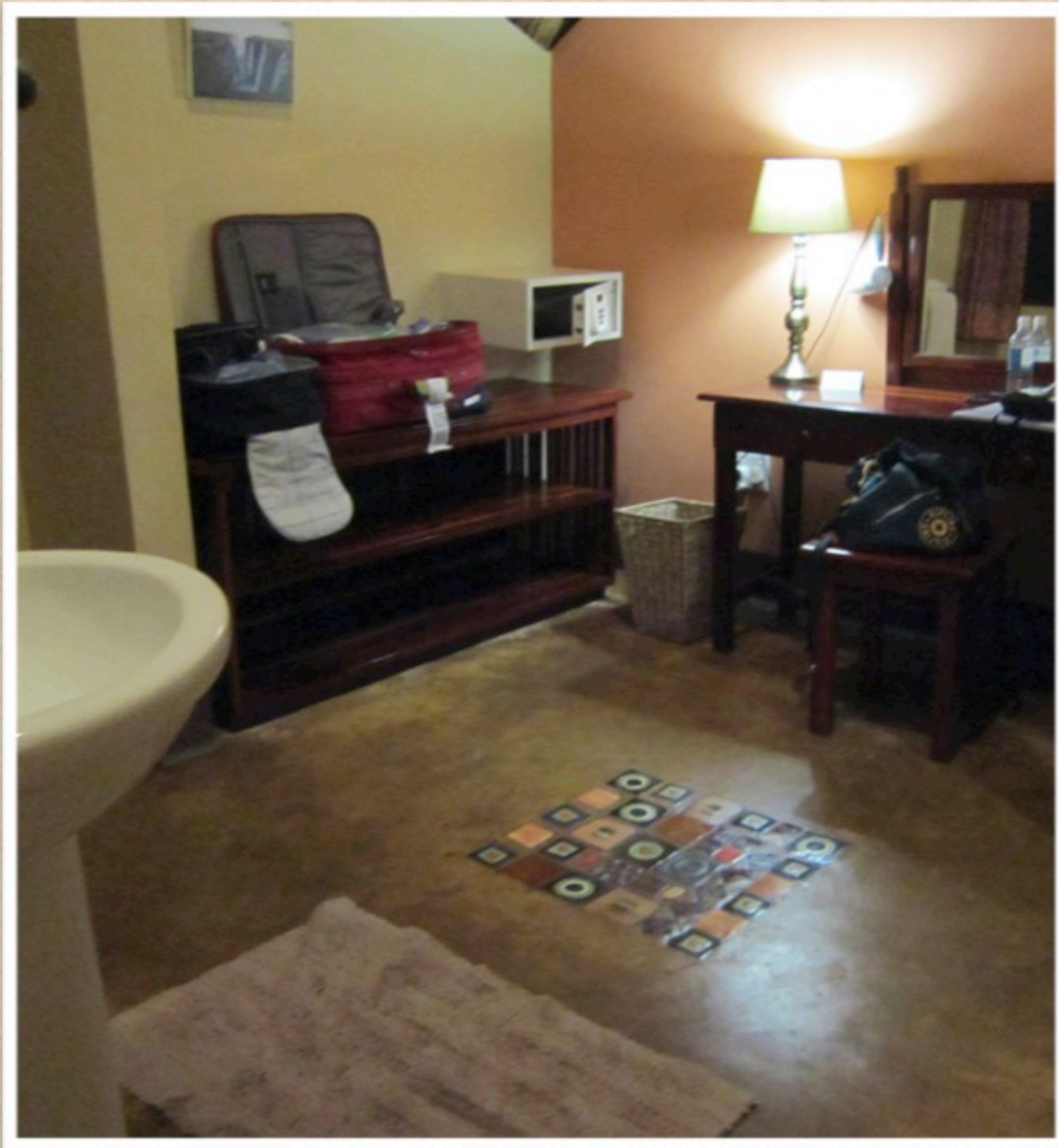






















About the Elephants: "Heart of Africa Zambezi Elephant Trails" Video

- Mashumbi - The female Matriarch, 35 years old leads the heard in their daily routine
- Danny - Late 40s Dominant bull - Soft and gentle nature, keeps the young bulls in check











Our Guides



Benson and family



Andrew, Benson, and
Other guide



“The Cowboy” and Richard



The "Meal a Day" programme
Sponsored by the Bushcamp company
A Community Education Project.















OUR PHILOSOPHY

We are all important

Be grateful every day

All men and women are equal

Help each other, don't blame each other

Leave anger at the gate, be positive

Communication is key

Life is better when you're laughing

Take work seriously but yourself lightly













NEW COLORS TO BE MADE

- 1 Cherry Blossom
- 2 Chilli Red
- 3 Fire Galaxy
- 4 Sky Galaxy
- 5 Azure
- 6 Chocolate Blue
- 7 Egg







LUBASI HOME

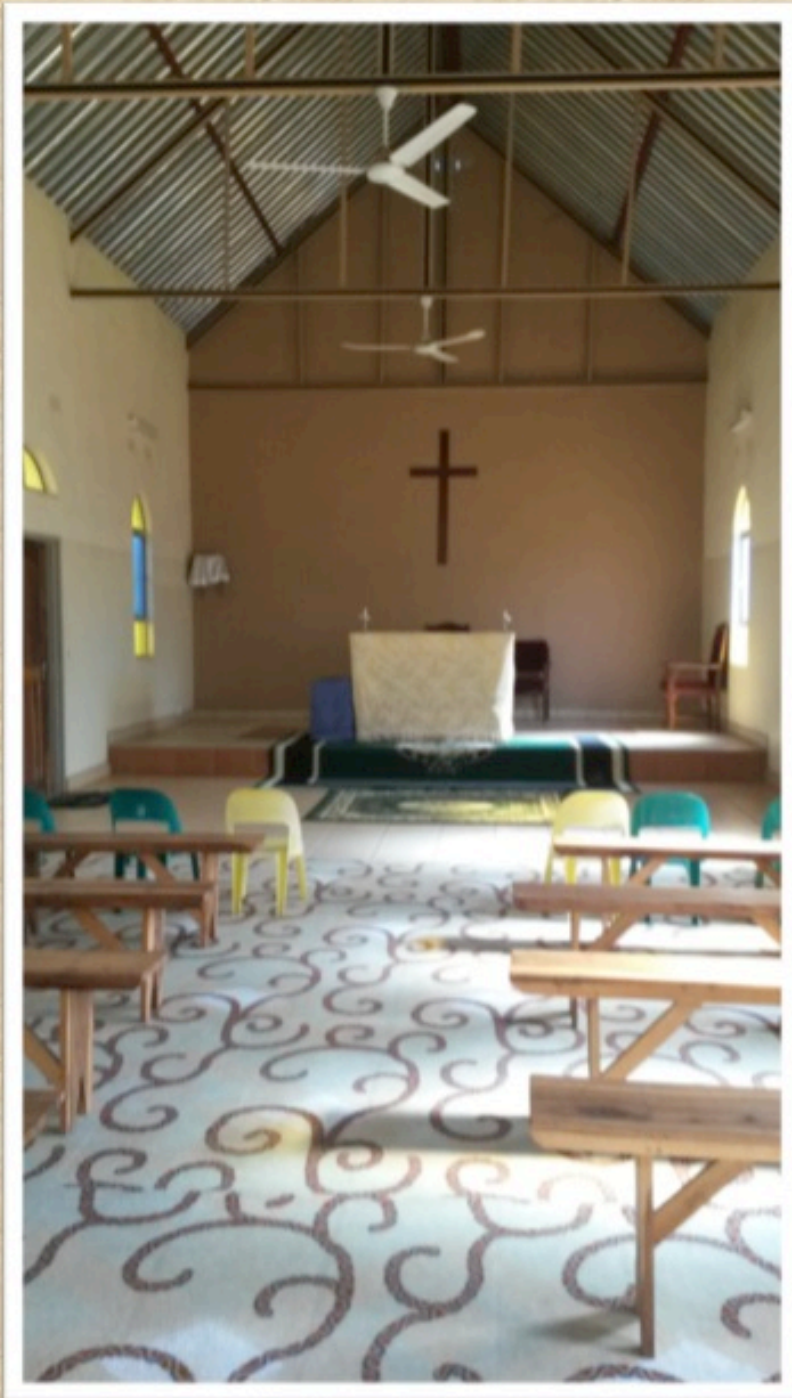
A Community Project for
the Care of Orphans and
Vulnerable Children

Livingstone, Zambia











GOVERNMENT OF BOTSWANA

Responsibility starts with 'YOU'



Use a Condom



HIV/AIDS

Funded by



ACHAP

Ipoletse Helpline 0800 600 700

Collect Free Brochures For more information



Collect Free Brochures For more information

Free Condoms Free Condoms Free



Made in Botswana

Responsible & Healthy Living











REFERENCE SITES -

- <http://safpar.com/> (Safari Par Excellence Homepage)
- <http://lib.colostate.edu/wildlife/atoz.php?letter=all> (List of African Animals)
- <https://www.onthegotours.com/Africa/Safari-Wildlife-Guide> (Africa Safari Guide)
- If your interested in supporting the orphanage contact:
- lubasihome@gmail.com or visit the web site www.lubasihome.org.

THE END

Thanks for being a part of our journey!

Credits:

Special Thanks To: Barbara Sadowsky for her photos

Directed by:

Kathleen Carpenter

Produced by:

Michael Feucht

mfeucht3d@gmail.com * www.3dmfdesign.com